



18 Gauge Stainless Steel Hand Sinks

HAND SINKS

ITEM #: _____

MODEL #: _____ QTY: _____

PROJECT: _____



SEHS-17



SEHS-17-TS

FEATURES

18 Gauge stainless steel top and bowl with a 8" backsplash

5" Deep tub.

Basket strainer and Z clip included

1 Year warranty is included

OPTIONAL MODEL FEATURES:

S - Side splash at left or right

SS - Side splash at left and right

KV - Knee valve

SD - Side splash at left and right, lever waste, overflow, and p-trap

CONSTRUCTION

All models are 304 Series S/S tops and bowls

Fully fabricated top and bowl guarantee

the same thickness and durability throughout the product

Welds and S/S ground to #4 finish

Drainboards are dipped and the bowls are die-stamped to ensure proper drainage

All specifications subject to change without notice.

SSP Cincinnati

1236 Clough Pike, Batavia, OH 45103

800-706-1055

SSP Spokane

421 N. Freya, Spokane, WA 99202

800-726-0553



18 Gauge Stainless Steel Hand Sinks

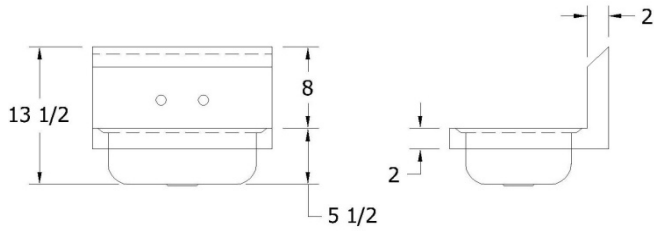
HAND SINKS

ITEM #: _____

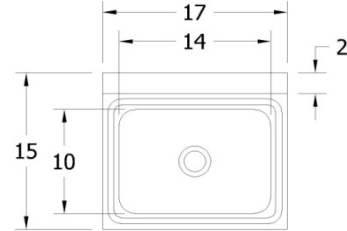
MODEL #: _____ QTY: _____

PROJECT: _____

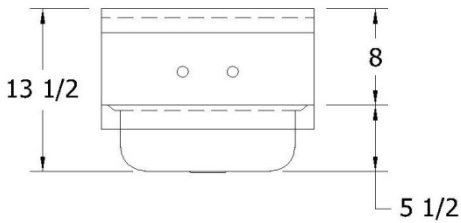
Specifications



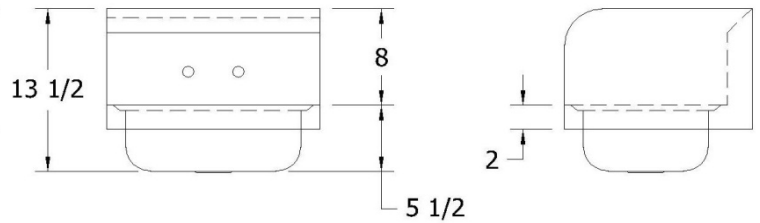
SEHS-17



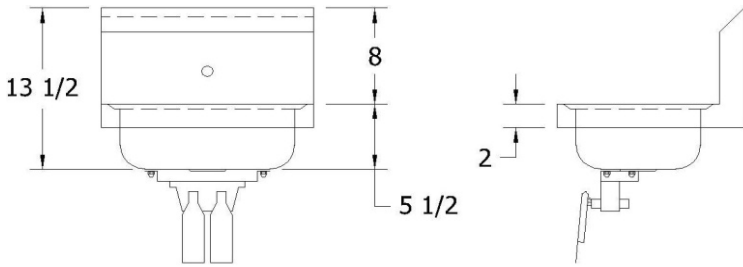
SEHS-Plan



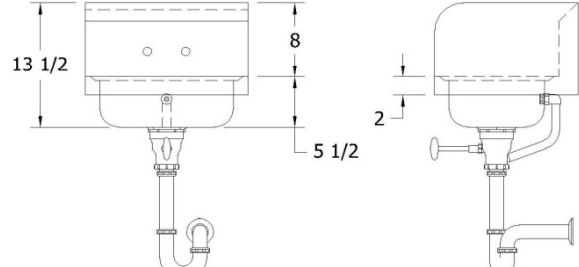
SEHS-17-S



SEHS-17-SS



SEHS-17-KV



SEHS-17-SD

All specifications subject to change without notice.

SSP Cincinnati

1236 Clough Pike, Batavia, OH 45103
800-706-1055

SSP Spokane

421. N. Freya, Spokane, WA 99202
800-726-0553